



LEWIS WINDROWER OWNER / OPERATOR MANUAL



MODEL # WR-2 WINDROWER II

Manufactured by: **LEWIS BROTHERS MANUFACTURING, INC.**
Post Office Box 146
Baxley, GA 31513
Tel: (912) 367-4651
Fax: (912) 367-3958

7-13-2020

INTRODUCTION

All Lewis Brothers equipment is manufactured under stringent production and quality assurance procedures prior to preparation for shipment. A final quality check is performed on all equipment before shipping.

The best equipment is only as good as its operation and management. Sound operation and good preventive maintenance practices are essential to efficient performance of your Lewis Windrower.

Questions on parts and service for the equipment covered in this manual should be referred to the local dealer from whom the equipment was purchased, or the nearest Lewis Brothers Dealer.

We sincerely thank you for purchasing Lewis Brothers equipment.

TABLE OF CONTENTS

INTRODUCTION	2
SAFETY	4
Owner's And Operator's Responsibility	5
General Precautions	6
WARRANTY	7
Limited Warranty	8
SPECIFICATIONS	9
Model WR-2 Specifications	10
SETUP AND OPERATION	11
Machine Setup	12
Operating Instructions	14
Lubrication	14
PARTS	15
DECALS	23
ASSEMBLY	24

SAFETY

OWNER'S AND OPERATOR'S RESPONSIBILITY

This manual is intended for use with your Lewis Windrower II. Extra effort has been made to provide for safe operation of this equipment. This manual as well as the safety decals placed on the equipment is part of that effort. Your new Windrower should perform the various functions for which it was designed if it is maintained, adjusted to your specific conditions, and operated correctly.

It is the responsibility of the owner and every operator of this equipment to read and understand this manual before initial startup, before each season, before performing service or maintenance tasks and prior to storing the equipment. Each employee who will work on or around this equipment should be properly instructed in how to do so safely.

It is important to understand the operational methods and safety issues mentioned in this manual. Lewis Brothers cannot anticipate all conceivable ways service and operational functions might be performed and of the possible hazardous consequences of such. Anyone using or servicing this equipment must first satisfy themselves that their chosen methods do not jeopardize the safety of themselves, others, or the equipment.

Read the warranty on page 8. The purchaser is required to fill out and return the registration card supplied with this owner's manual within ten (10) days of purchase to Lewis Brothers Manufacturing to be eligible for warranty coverage.

Genuine Lewis replacement parts will insure the durability and long life of your windrower. Lewis repair parts should be ordered through your Lewis Brothers' Dealer.

Operators should thoroughly inspect the Windrower before and after each use. All bearings should be properly lubricated as specified, and any worn or damaged parts repaired or replaced. Failure to repair or replace worn parts could result in damage or excess wear to other parts.

GENERAL PRECAUTIONS

- **MAKE SURE** everyone is clear of the equipment before starting the tractor's engine and while equipment is under operation.
- **DO NOT** permit anyone to ride on this equipment.
- **KEEP** hands, feet, hair and clothing away from all moving parts. Do not wear loose clothing while operating equipment, as this may present an entanglement hazard.
- **DRIVE** the pulling tractor at speeds compatible with conditions and good safety practices. This is especially important when operating over rough ground, on slopes, crossing ditches or while turning.
- **NEVER LEAVE** this equipment in the raised position when parked and unattended.
- **STOP** the tractor's engine and relieve any hydraulic pressure by actuating all hydraulic valves in both directions before disconnecting any part of the hydraulic system.
- **MAKE SURE** hitch components are attached securely before operating or transporting.
- **USE** flashing warning lights when on highways, except where prohibited by law.
- **STOP** tractor engine before leaving operator's position to adjust, lubricate, clean or unclog machine.
- **KEEP** all shields in place.
- **MAXIMUM** towing speed is 25 MPH.
- **OBSERVE** all safety decals located on machine. Should any safety decal become damaged unreadable, or lost, **REPLACE IT IMMEDIATELY**. New decals may be obtained from your Lewis Brothers' dealer.
- **WEAR** dust respirator at all times while using this machine (3M part # 8710 is recommended).

WARRANTY

LEWIS BROTHERS MANUFACTURING, INC.

LIMITED WARRANTY

Lewis Brothers Manufacturing, Inc. (hereinafter referred to as "LBM") warrants each item of new equipment manufactured by LBM to be free from defects in material and workmanship under normal use and service.

The obligation of LBM under this LIMITED WARRANTY is limited to repair or replacement, as LBM may elect, of any parts that prove, in LBM's judgment, to be defective in material and workmanship within the first twelve (12) months after the date of invoice to the original purchaser. THIS LIMITED WARRANTY DOES NOT APPLY TO BELTS, HYDRAULIC HOSES, TIRES, AND OTHER SERVICE ITEMS, WHICH SHALL HAVE A NINETY (90) DAY WARRANTY.

THIS LIMITED WARRANTY WILL APPLY FOR (3) MONTHS ONLY WHEN THE UNIT IS USED IN A COMMERCIAL APPLICATION.

All warranty part repairs and replacements must be made by a certified LBM dealer. Any outside work or alterations made without written approval of LBM will render this LIMITED WARRANTY void.

LBM's obligation specifically excludes any liability for consequential damages, such as loss of profit, delays, expenses, damage to goods or property used in connection with or processed in or by the product sold, or damage to the product sold from whatever cause, whether or not such loss is due to negligence by LBM.

This LIMITED WARRANTY shall not apply to any item that has been operated in a manner not recommended by LBM.

No person is authorized to give any other warranties or to assume any other liability on behalf of LBM unless made in writing by Lewis Brothers Manufacturing, Inc.

THIS LIMITED WARRANTY IS IN LIEU OF AND REPLACES ALL OTHER WARRANTIES, EXPRESSED OR IMPLIED. WARRANTIES OF MERCHANTABILITY AND FITNESS FOR A PARTICULAR PURPOSE ARE EXCLUDED, AS ARE ALL OTHER REPRESENTATIONS TO THE USER-PURCHASER AND ALL OTHER OBLIGATIONS OR LIABILITIES, INCLUDING LIABILITY FOR INCIDENTAL AND CONSEQUENTIAL DAMAGES, ON THE PART OF LBM.

LEWIS BROTHERS MANUFACTURING, INC.
P.O. BOX 146 - BAXLEY, GA. 31513
JANUARY 15, 2020

SPECIFICATIONS

SPECIFICATIONS

Lewis Windrower Model # WR-II

Width	8 ft-2 in
Length	64 in
Height	50 in
Weight	1800 lbs
Blade Width	93 in
Aux. Hyd. Outlets	2 sets (required)
Tractor hp (creeper gear recommended)	75hp

SETUP AND OPERATION

MACHINE SETUP

Attachment to Tractor

The Lewis Windrower II can be operated on any tractor equipped with a standard 3 – point hitch and with a minimum of two sets of remote hydraulic hook ups.



Figure 1

Attach the Windrower to the tractor's three-point hitch, (See Figure 1) and secure with the proper attachment pins. Next, attach the drive shaft to the PTO shaft on the tractor. (See Figure 2) Slide the drive shaft onto the PTO shaft until the lock snaps in place. Always try to pull the drive shaft from the PTO after it is in place, if the drive shaft slides and is not locked in place, repeat the process.

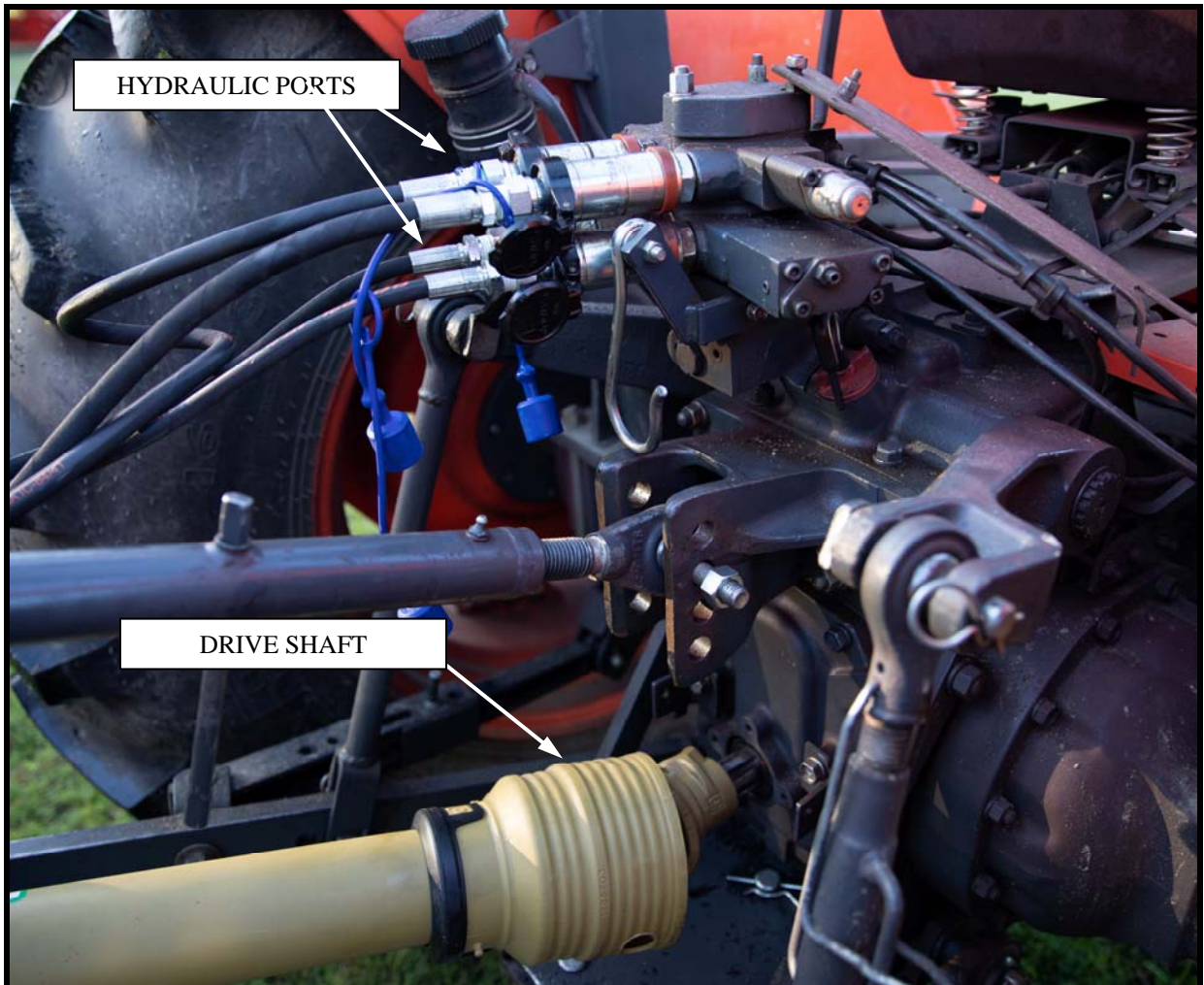



Figure 2

Connect the Windrower hydraulic lines to the selected remote hydraulic ports located on the tractor (See figure 2). **IMPORTANT:** The Lewis Windrower II is designed to handle a maximum system pressure of 2500 PSI. Excess pressure should be avoided in order to prevent damaging system components. Tractors that are capable of supplying higher hydraulic pressure should install a pressure regulator kit to prevent damage to the hydraulic system.

OPERATING INSTRUCTIONS

The ground speed will always vary depending on the particular operation being performed. The Lewis Windrower II is designed to be operated with the tractor PTO turning within a range of 500 to 540 RPM. 540 RPM is the most desirable PTO speed. Place the machine into operation by first engaging the PTO of the tractor with the tractor engine at a safe idle speed.

IMPORTANT: ALWAYS ENGAGE PTO CLUTCH SLOWLY AND SMOOTHLY AT LOW RPM TO AVOID SUDDEN STARTS AND FAST CLUTCHING THAT CAN DAMAGE THE DRIVE COMPONENTS.

 **WARNING** Never operate the Windrower with anyone near the machine. Never get off the tractor with the PTO Engaged. Make sure that the area around the *Windrower* is clear before operation.

Storage

- Be sure to clean and lubricate the windrower after each use and maintain all guards and decals. Should any guard or decal be damaged or need replacing, contact your Lewis Brothers Dealer.

LUBRICATION

CAUTION: Always look for hydraulic leaks with the tractor's engine off. Wear hand and eye protection. Use cardboard or wood instead of your hands to search for a leak's source.

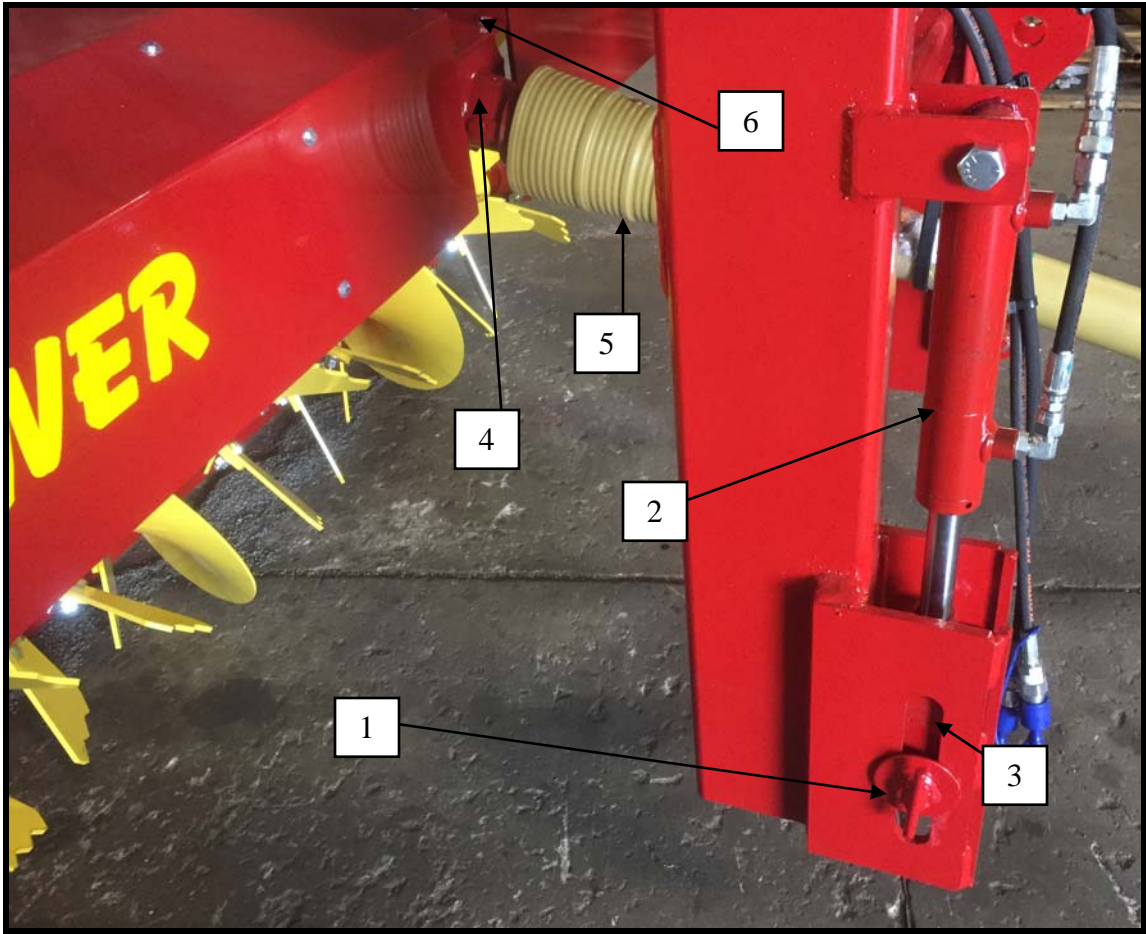
Grease the following points lightly each 50 hours and before storage.

1. Cylinder Shaft Bearings

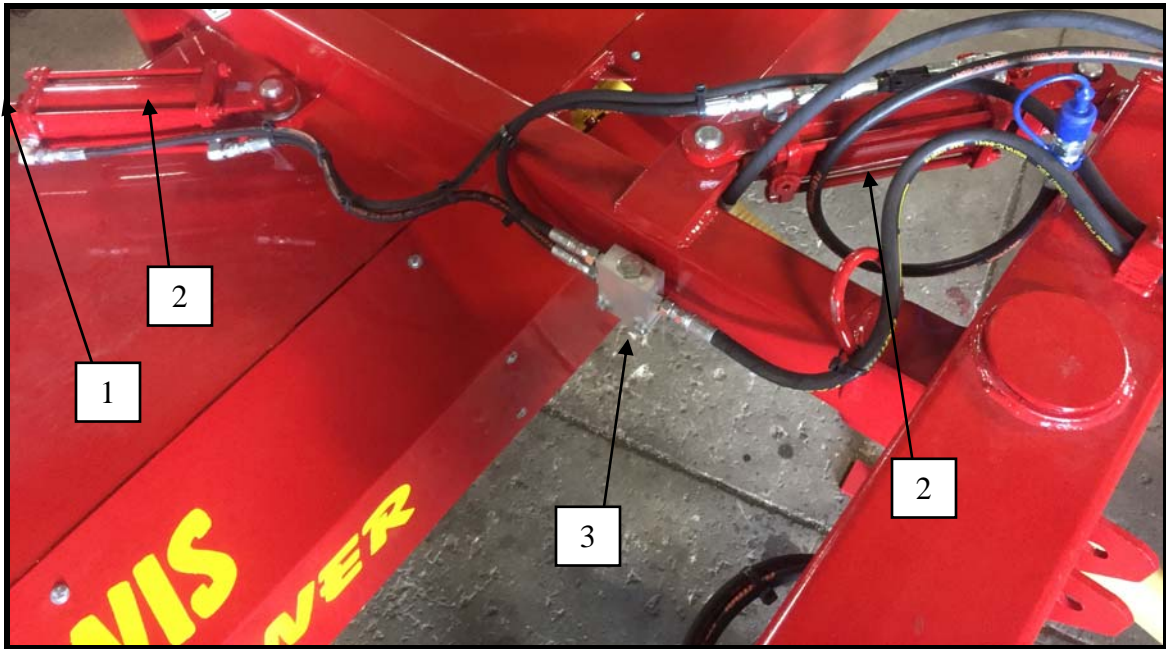
Grease all chains and bearings after each use.

ATTENTION: Be sure to keep drive chain well lubricated and free of obstructions to insure proper operation.

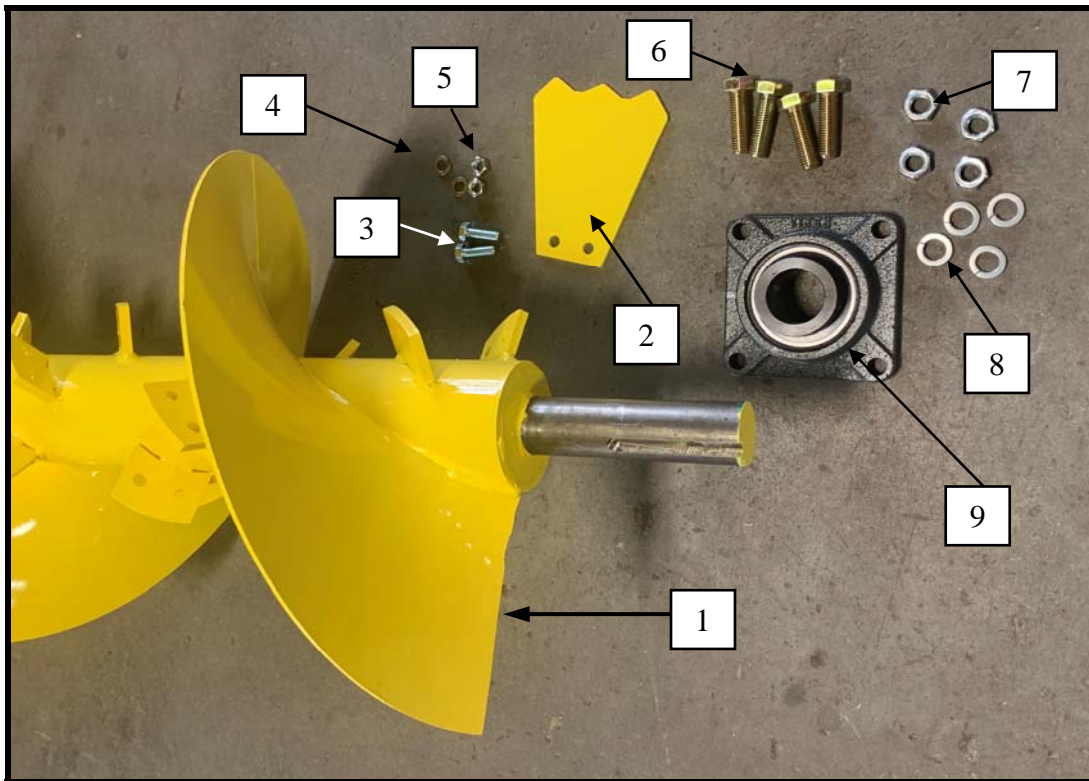
PARTS



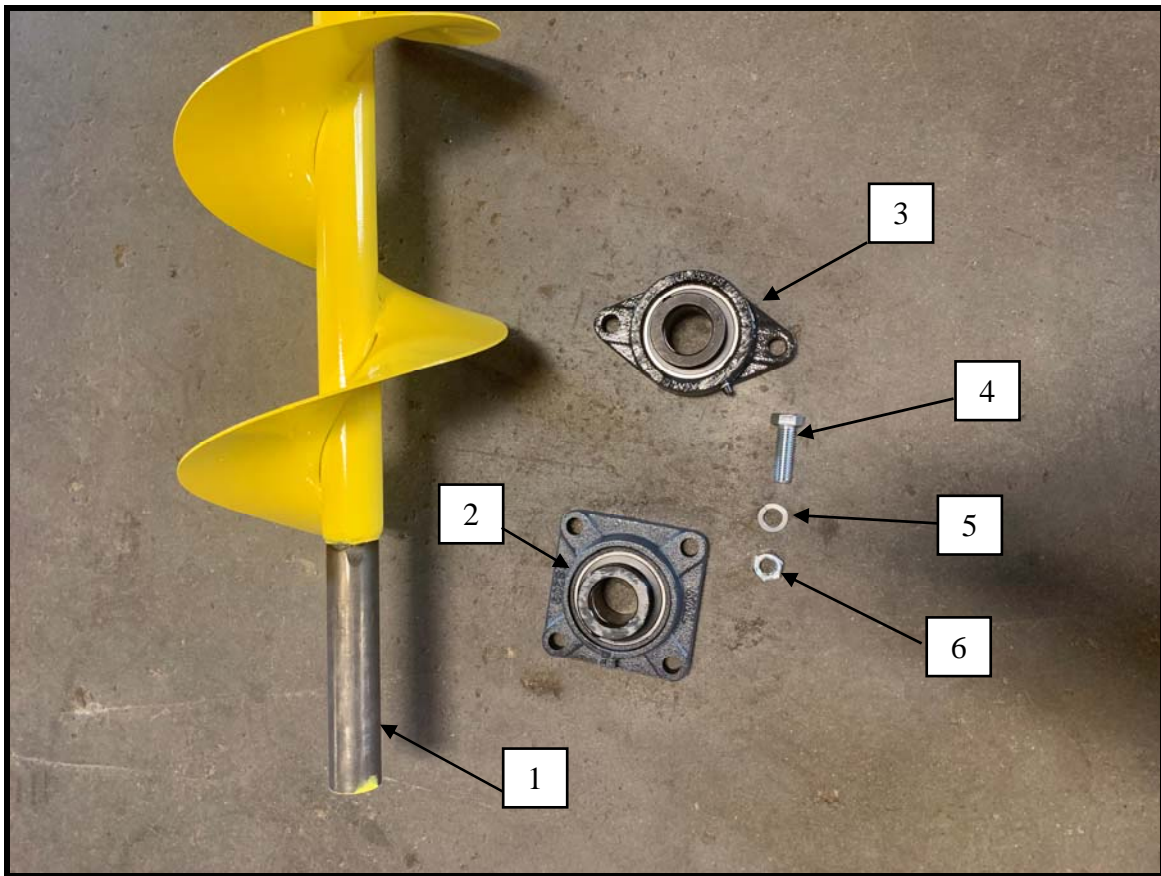
ITEM	PART #	DESCRIPTION
1	WR-300630	1-1/8 Hitch Pin
2	WR-300040	Right Lift Arm Mount Hydraulic Cylinder
3	WR-300120	Right Lift Arm Mount
4	WR-100028	Gear Box
5	WR-100025	Drive Shaft
6	HW-960330	Gear box mount bolt 12mm-1.75 x 20mm lg, w/shoulder



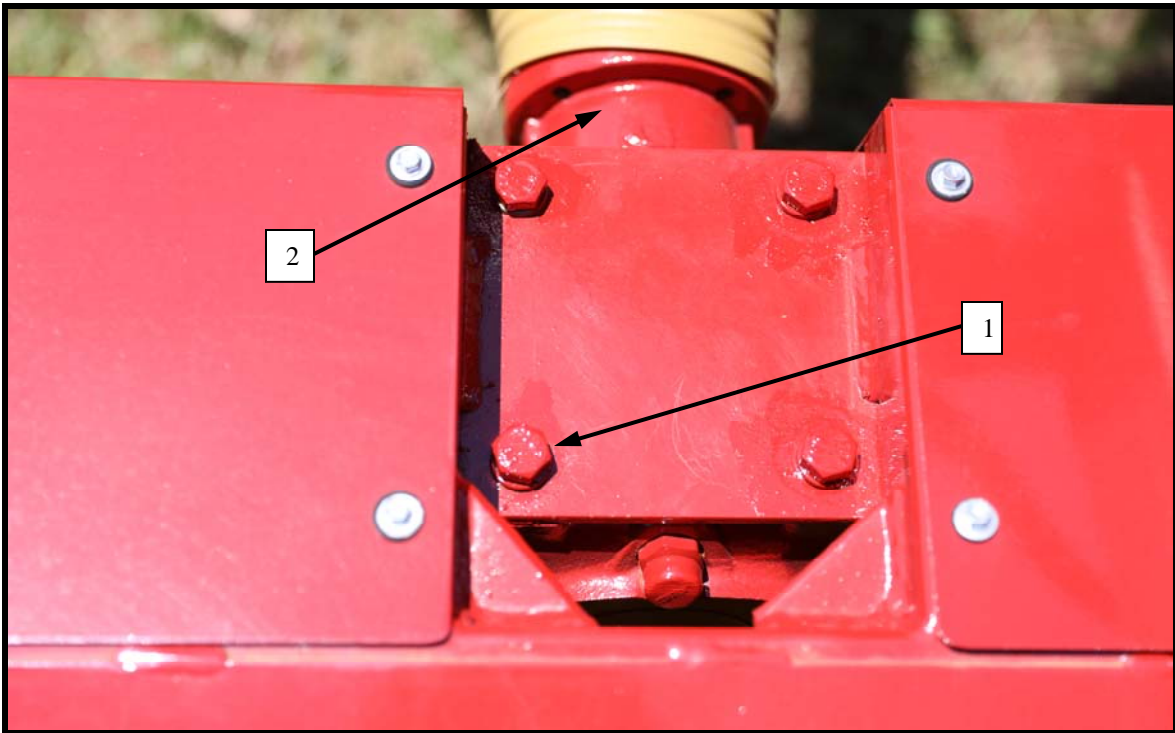
ITEM	PART #	DESCRIPTION
1	WR-300015	Hydraulic Cylinder Spacer
2	HK-101253	Hydraulic Cylinder 3" x 6"
3	WR-300008	Flow Divider Valve (complete)



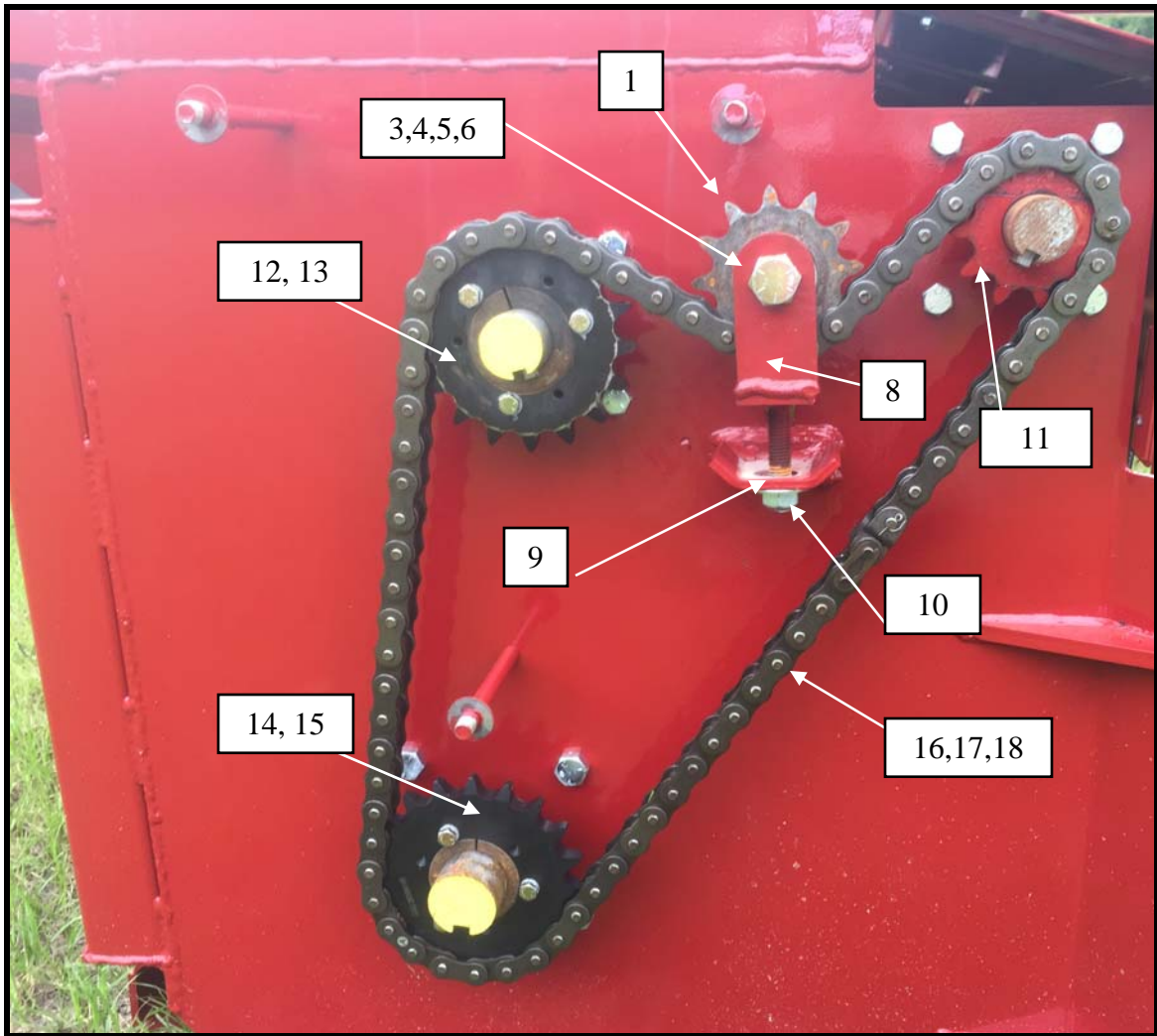
ITEM	Part #	Description
1	WR-300410	Cylinder Weldment
2	WR-300416	Paddle
3	HW-208108G5Z	Bolt, Hex Head 1/2NC X 1-1/2LG
4	HW-335208Z	Lock Washer, Lock, 1/2"
5	HW-300208ZG5	Nut, Hex, 1/2-13NC
6	HW-212112G5Z	Bolt, Hex Head, 5/8-11NC x 2, G5, ZP
7	HW-300212ZG5	Nut, Hex, 5/8-13NC, ZP, G5
8	HW-335212Z	Washer, lock, 5/8, ZP
9	WR-600001	Bearing, Cylinder



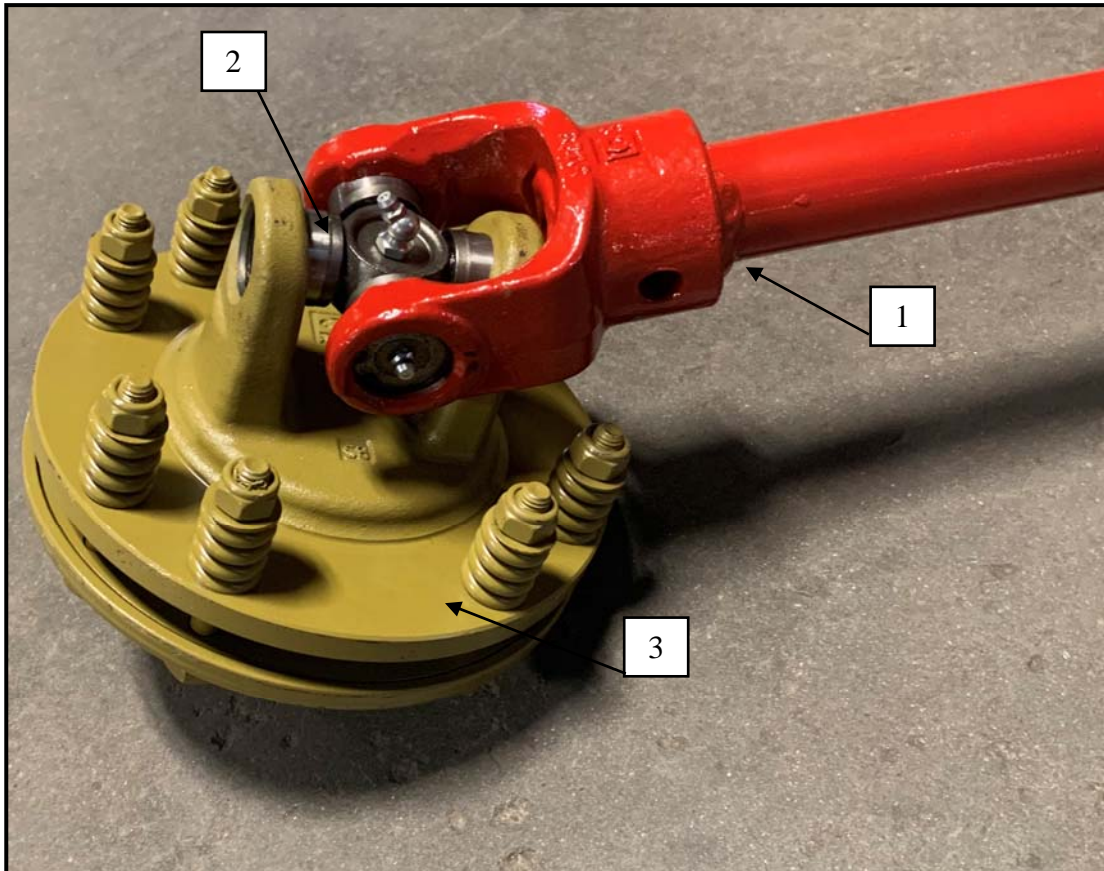
Item	Part #	Description
1	WR-300420	Top Auger
2	WR-300419	Four bolt flange bearing 1-5/8 Shaft
3	WR-300422	Two bolt flange bearing 1-5/8
4	HW-208112G5Z	Bolt, Hex Head, 1/2-13NC x 2LG, G5, ZP
5	HW-335208Z	Washer, Lock, 1/2, ZP
6	HW-300208ZG5	Nut, Hex Head, 1/2-13NC, ZP, G5



Item #	Part #	Description
1	HW-960330	Bolt, Hex Head, 12 MM-1.75 x 20MM LG, ZP, w/shoulder
2	WR-100028	Gear Box



ITEM#	PART #	DESCRIPTION
1	WR-300003	Idler Sprocket
2		
3	HW-216132G8	Bolt, Hex Head, 3/4-10NC x 4-1/2 LG, G8, ZP
4	HW-301216TLZ	Nut, Top Lock, Hex, 3/4-10 NC
5	HW-325216Z	3/4 USS, Flat Washer, ZP
6	WR-300605	Spacer 1" LG X 1-1/4" OD X 13/16" ID
7		
8	WR-300600	Chain Idler Mount
9	HW-325212Z	5/8 USS Flat Washer, ZP
10	HW-301212NEZ	Nut, Nylon Insert Lock, Hex, 5/8-11, Type ne
11	WR-300004	Sprocket, 1-5/8 Bore # 80 Chain (Drive)
12	WR-600084	Sprocket 80SK - 17T (Auger)
13	WR-300005	Bushing SK - 1-5/8
14	WR-600097	Sprocket 80SK-19T (Cylinder)
15	WR-600004	Bushing, SK-2
16	WR-600098	#80 Roller Chain (69 Pitches)
17	WR-600082	Connecting Link #80
18	WR-600081	Offset Link #80



Item	Part #	Description
1	WR-300130	Shaft and Yoke Weldment
2	WR-100026	U-Joint
3	WR-100024	Torque Limiter

DECALS



HK-100916



HK-100899



HK-100912

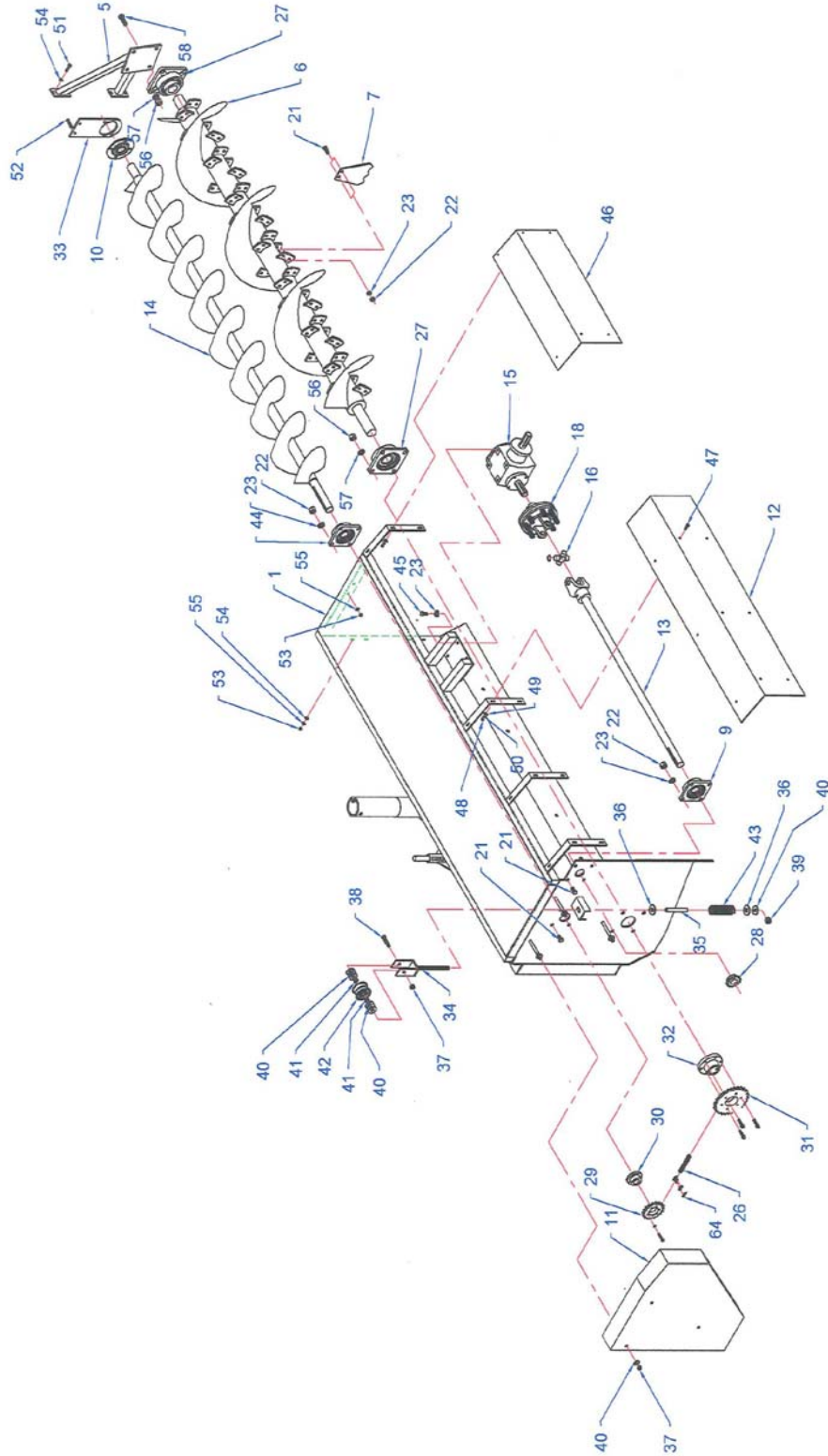


WR-600061



HK-100908

Drive Parts



NOTE: GEAR BOX OIL (**SAE 80W-90**)

Drive Parts

ITEM #	PART #	DESCRIPTION
1	N/A	FRAME WELDMENT
5	WR-300460	LEFT HAND CYL. MOUNT WELDMENT
6	WR-300410	CYL. WELDMENT
7	WR-300416	PADDLE 20" CYL
9	WR-300421	BEARING FOUR BOLT FLANGE 1-1/2" SHAFT
10	WR-300422	BEARING (4) BOLT FLANGE MOUNT 1-5/8" SHAFT
11	WR-300500	CHAIN GUARD WELDMENT
12	WR-300530	SHAFT GUARD
13	WR-300130	YOKE, SHAFT WELDMENT
14	WR-300420	TOP AUGER
15	WR-100028	GEAR BOX
16	WR-100026	U-JOINT
17	WR-100025	DRIVE SHAFT (NOT SHOWN)
18	WR-100024	TORQUE LIMITER
21	HW-208108G5Z	BOLT, HH, 1/2-13NC X 1-1/2 LG
22	HW-300208ZG5	NUT, HEX, 1/2-13NC
23	HW-335208Z	1/2" WASHER, LOCK, SPLIT ZP
26	WR-600098	#80 ROLLER CHAIN (69 PITCHES)
27	WR-600001	CYLINDER BEARING
28	WR-300004	SPROCKET, 11T, 1-1/2 BORE, #80 ROLLER CHAIN
29	WR-600084	SPROCKET 80SK 17 (AUGER SPROCKET)
30	WR-300005	BUSHING SK 1-5/8
31	WR-600097	SPROCKET 80 SK 19 (CYL SPROCKET)
32	WR-600004	BUSHING SK-2
33	WR-300471	AUGER HANGER MOUNT
34	WR-300600	CHAIN ROLLER MOUNT
35	WR-600359	CHAIN TENSION SPRING GUARD
36	HW-325216Z	3/4, USS FLAT WASHER, ZINC PLATED
37	HW-301208SC	NUT, STOVER LOCK, HEX, 1/2-13NC
38	HW-208122G5Z	BOLT, HEX HEAD, 1/2-13 X 3-1/4 LG, G5, ZP
39	HW-301212NEZ	NUT, NYLON INSERT LOCK, HEX, 5/8-11NC
40	HW-325208Z	1/2, USS, FLAT WASHER, ZP
41	HK-100961	SHIM SPACER
42	HK-101295	IDLER
43	HK-100704	SPRING
44	WR-300419	BEARING FOUR BOLT FLANGE 1-5/8 SHAFT
46	WR-300532	SHAFT GUARD (L.H. END)
47	HW-200106G5	BOLT, HEX, 1/4-20 X 1-1/4 LG, G5, ZP
48	HW-300200ZG5	NUT, HEX, 1/4-20, G5, ZP
49	HW-325200Z	1/4, USS, FLAT WASHER, ZP
50	HW-335200Z	1/4, WASHER, LOCK, ZP
51	HW-204106G5Z	BOLT, HEX HEAD, 3/8-16 X 1-1/4" LG, G5, ZP
52	HW-204120G5Z	BOLT, HEX HEAD, 3/8-16 X 3" LG, G5, ZP
53	HW-300204ZG5	NUT, HEX, 3/8-16, ZP, G5
54	HW-325204Z	3/8, USS, FLAT WASHER, ZP
55	HW-335204Z	3/8, WASHER, LOCK, ZP
56	HW-300212ZG5	NUT, HEX, 5/8-11, ZP, G5
57	HW-335212Z	5/8, WASHER, LOCK, ZP
58	HW-212112G5Z	BOLT, HEX HEAD, 5/8-11 X 2" LG, G5, ZP
64	WR-600094	CONNECTING LINK

NOTE : TORQUE LIMITER REPAIR DISK # 31971 (TWO REQUIRED)